



NOTE

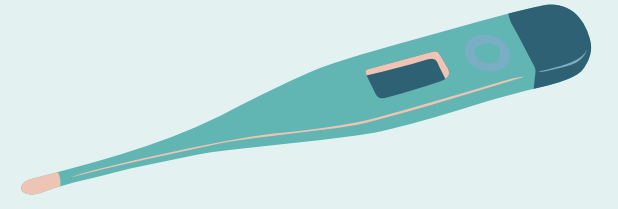


All patrons are required to obey all safety and security rules at the library, including such things as, but not limited to, the use of PPE while in the library. Safety and security rules may be permanent or temporary, and will be presented on signage at the entrance and throughout the library.

All patrons must wear masks!



If you feel sick... stay at home!



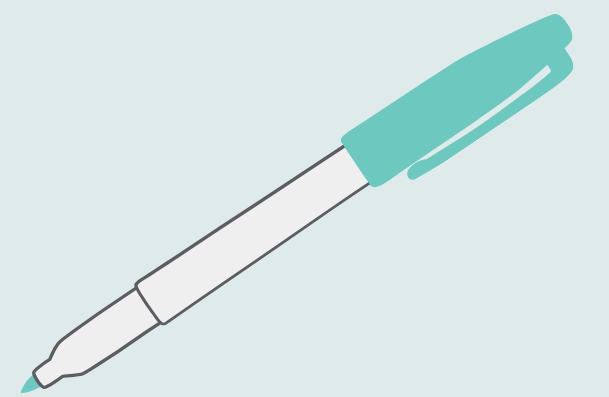
Maintain social distancing



Limit of 10 items per visit.



Notary services available by appointment only.



No computing, study rooms, meeting room, or library seating areas available.

Fax and copy available. Please inform staff when using the machine!

